

Adobe® InDesign Clipping Paths and Text Wraps

There are two ways to create a clipping path in Adobe® Photoshop. The method you choose will depend on the kind of image you have.

- Use the Pen tool to create clipping paths on images with stark contrast
- Use the Magic Wand tool to creating clipping paths on images with lots of shading.

Creating a Clipping Path with the Pen Tool

1 Open the image in Photoshop.

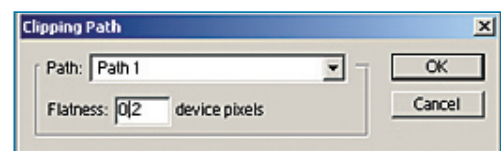
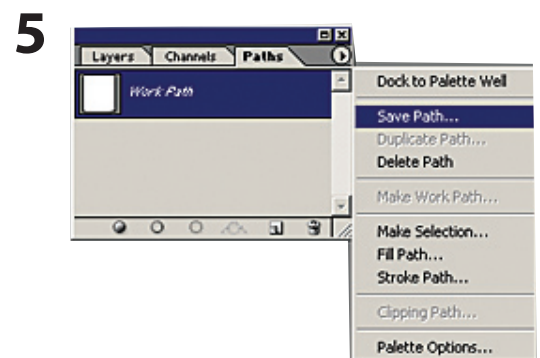
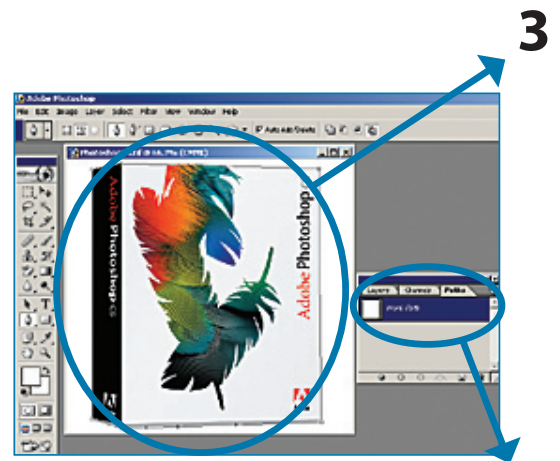
2 Select the pen tool. On the pen palette, click the **Paths** button, which looks like the pen tool inside a box.

3 Use the Pen tool to draw an outline around the image. To close the outline, click on the first pen point you made.

4 Open the Paths palette (**Window>Paths**). You will see your path is called "work path" on the palette.

5 Click the arrow in the upper-right corner of the palette and select **Save Path** and click OK. Click the arrow again and select **Clipping Path**. In the Flatness field, type **0.2** and click OK.

6 Save and close the image.



Adobe® InDesign Clipping Paths and Text Wraps

Creating a Clipping Path with the Magic Wand Tool

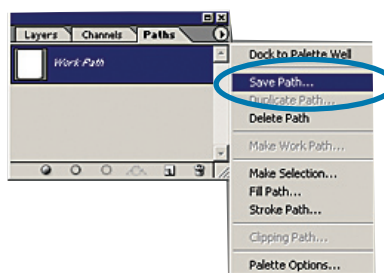
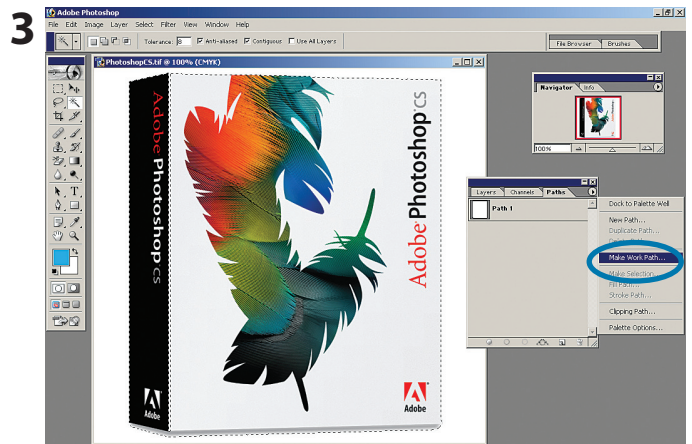
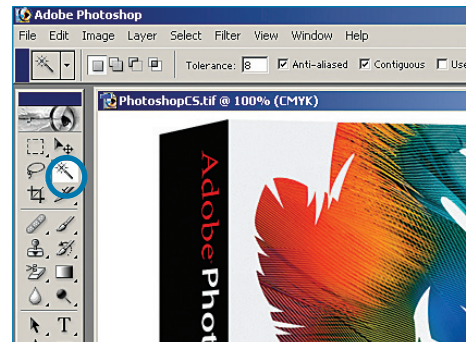
1 Open the image in Photoshop.

2 Select the Magic Wand tool, and then click in the area you want to outline, then choose **Select>Similar**. If the area you want to outline contains a lot of shading, it may be easier to click in the surrounding area and then choose **Select>Inverse** to select the outline area.

3 Select **Window>Paths** to open the Paths palette. From the Paths palette menu select **Make Work Path**. Set the Tolerance at **0.5** pixels.

4 Select **Save Path** and then select **Clipping Path**. Set the Device Pixels at **0.2**.

5 Save and close the image.



Adobe® InDesign Clipping Paths and Text Wraps

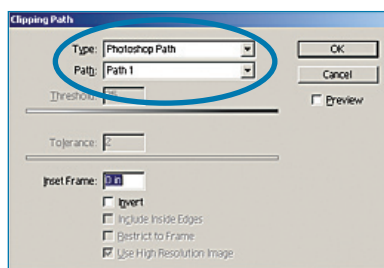
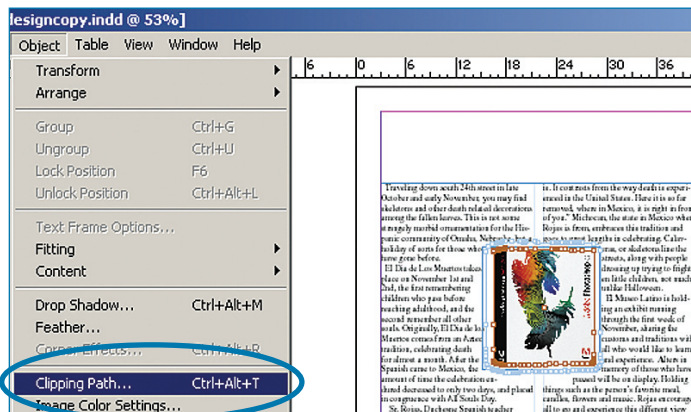
Select Clipping Path and Text Wrap Options

1 To wrap text around an image in InDesign, place an image with a clipping path in the InDesign document.

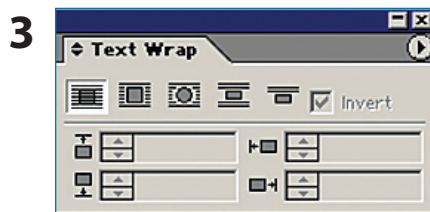
2 Select the image and choose **Object>Clipping Path** to open the Clipping Path window.

- For Type, choose **Photoshop Path**.

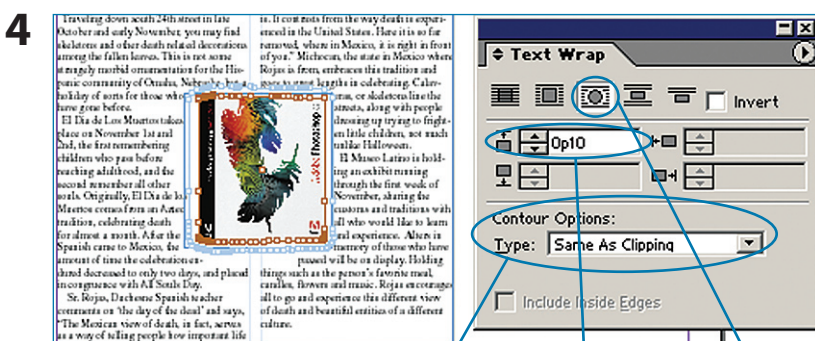
- For Path, choose the name of the path you created in Photoshop. (Photoshop's default name is Path 1.)



3 With the image still selected, go to **Window>Text Wrap** (InDesign 2.0), or **Window>Type & Tables>Text Wrap** (InDesign CS and above) to open the Text Wrap palette.



4 On the Text Wrap menu, click the **Wrap Around Object Shape** icon (third from the left). From the **Type** drop-down menu under **Contour Options**, select **Same As Clipping**. Then enter the outset value — how far away from the object edges the text will be.



Contour Options

Outset value

Wrap Around Object Shape icon